

Made in Japan

dandelion
waxing · nails · lash

 COAT

LED top coating for eyelashes

First in Indonesia, only at Dandelion

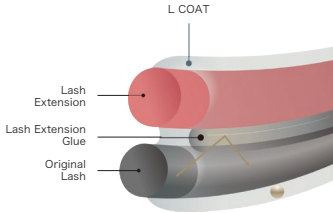
NEW

Dandelion Lash Treatment 2024

L COAT

LED top coating for eyelashes

What is L COAT?

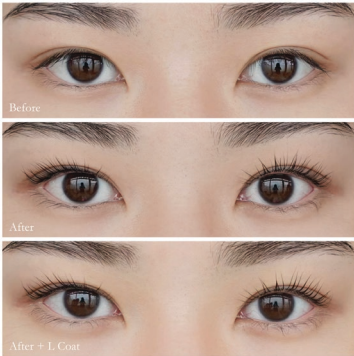


LED COATING · LEDコーティング · L COAT · Lコート

L COAT is a coating layer applied on top of your lash extensions or lash lift, cured using safe LED light.

L COAT is a new patented technology from 株式会社ビュプロ (BeauPro) Japan.

PRICE +IDR 200,000 per treatment



Lash Lift + L COAT



Lash Extension + L COAT

Benefits:

- Add lash durability & improve lash retention by **1-2 weeks!**
- Improve lash tidiness & maintain their form & shape for weeks!
- Used to achieve the popular **wet & textured "mascara look"** 束感
- **Waterproof**
- Process takes 10-15 mins only!

FAQ

Our Certified Eye Designer has been certified by BeauPro Japan



1. Is L COAT safe for the skin/health?

Yes. L COAT has been tested on hundreds of clients in Japan since 2023. Applied only on the lash—not on skin. It uses low watt (5w) LED that is similar to regular lighting & sunrays. The usage of LED during the treatment is only ±30 secs for each eye & special covers are used to protect your eyelids.

2. Will it damage my original lash?

L COAT is just a temporary coating that fades over time, causing **no damage to natural lashes**. L COAT for lash lift even contains keratin to nourish the lash.

3. Can L COAT be done during a refill? How often should refills be done?

Yes, L COAT can be done again during a lash extension refill/lash lift retouch.

Recommended lash refill time – Without L COAT: up to 3 weeks – With L COAT: up to 4 weeks

4. Is L COAT water & oil-proof?

L COAT is **waterproof immediately**, but it is best to avoid oil-based eye products.

