

Lash

Catalogue



dandelion

waxing · nails · lash

 @dandelion.id

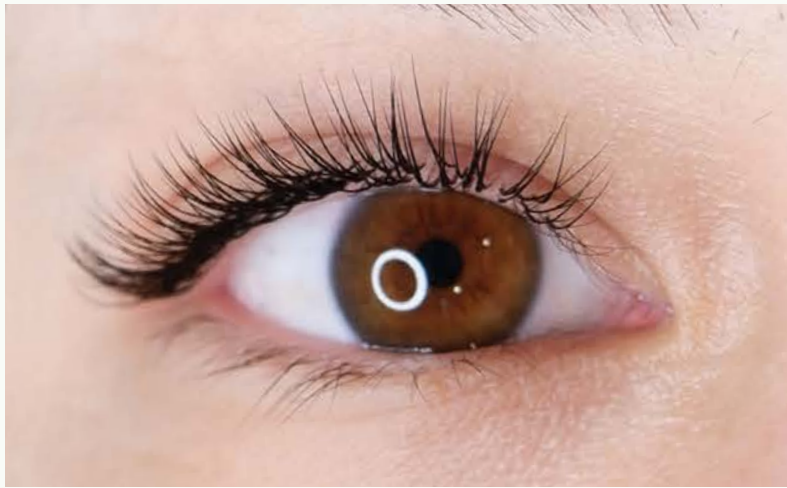
Lash Variations

ラッシュバリエーション

Single Lash

One extension glued to one natural lash

シングルラッシュ



#CleanLash

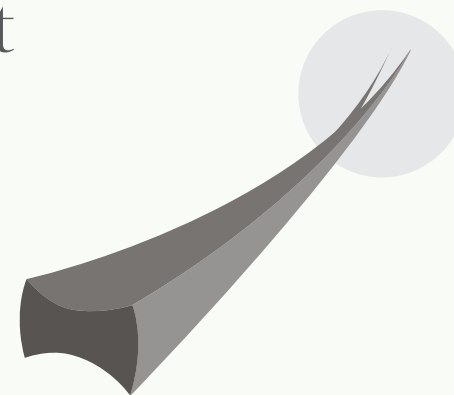
Tapered from the base



Thickness: 0.12 (#HyperRealistic), 0.15, 0.18, 0.2



Flat Lash #SuperSoft



Thickness: 0.15, 0.2

Volume Lash

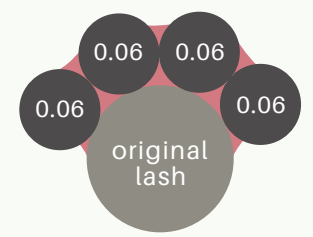
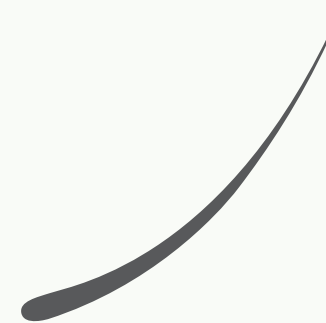
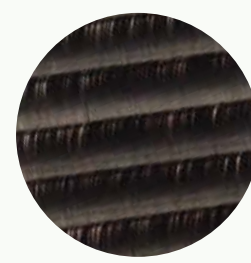
Soft Volume : 3-4 lash strands • Rich Volume : 4-5 lash strands

ボリュームラッシュ



BLACK #CleanLash

Superfine extensions

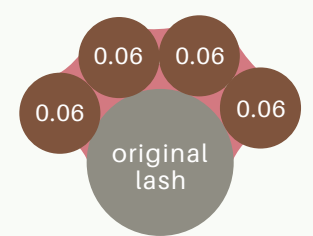
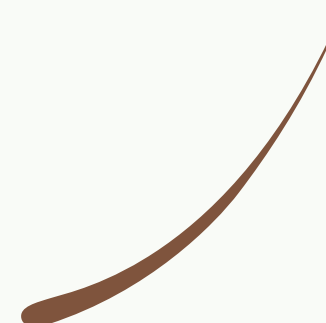


Thickness: 0.06



BROWN #EspressoLash

Warm brown hue



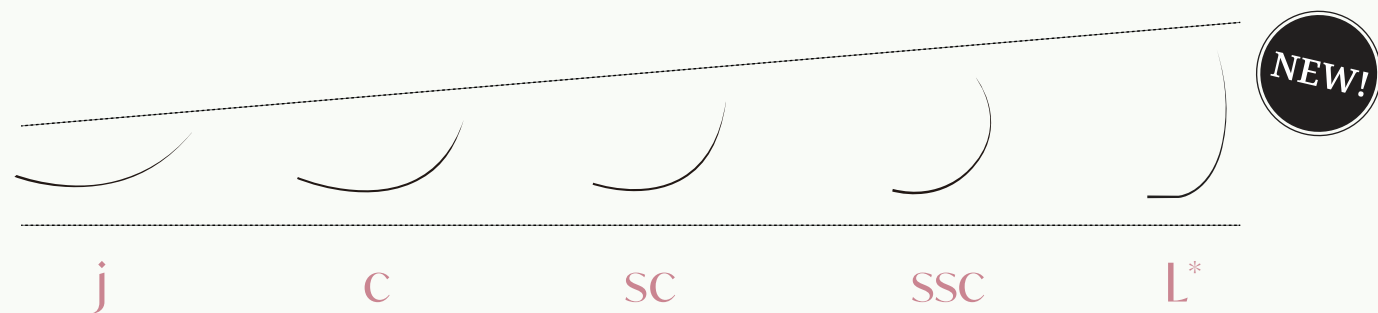
Thickness: 0.06

Curl

カール

Thickness

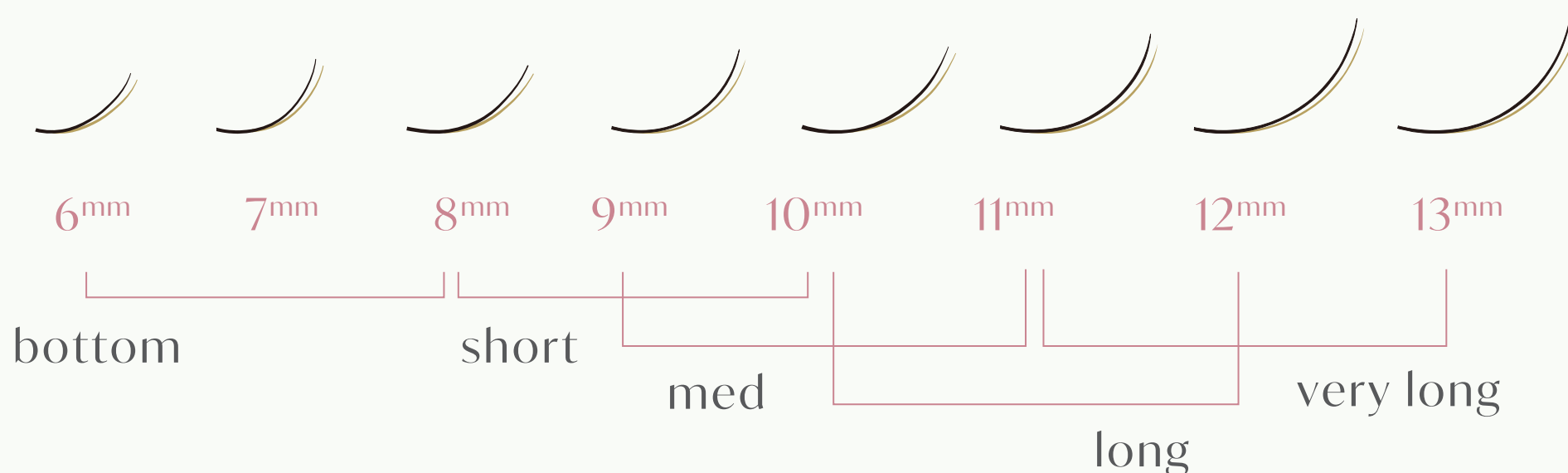
太さ



*Only available in 0.15 Flat Lash

Length

長さ





EXTREME CURL

L-CURL

Brighter eyes, just like a 'lash lift'



Perfect for very downward lash clients who always feel a “shadow” on the upper eye after lash extensions



Lash Details: (Extreme Curl) Flat Lash #SuperSoft L CURL 0.15 9~11mm Gorgeous Design, Bottom Lash: J 0.06 6mm + L COAT + Styled using RERUJU Eyelash Coating Pro



BETTER RETENTION

BOLDER LOOK

SOFTER FEEL

Made in Japan

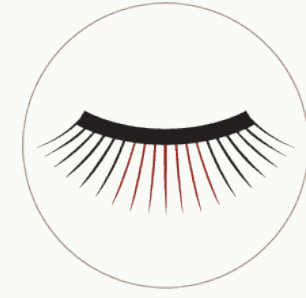
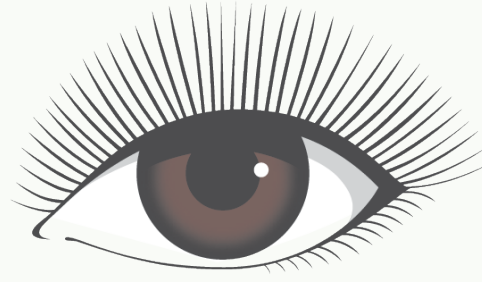
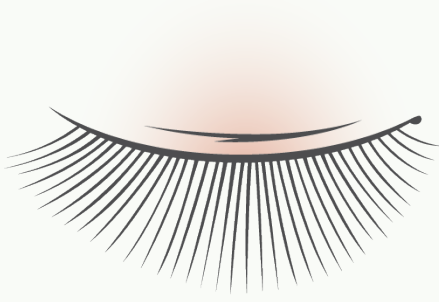
Available only in Single Flat Lash 0.15 (natural thickness) & black color



Cute

キュート

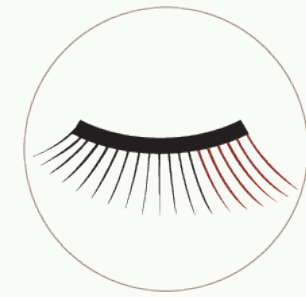
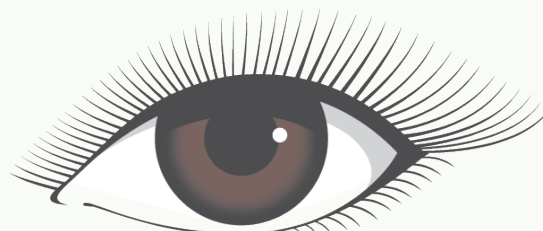
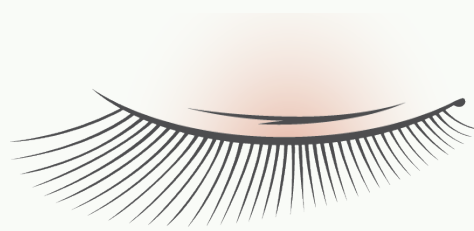
- Longest in the center of the eyes
- Makes the eyes bigger/rounder
- Best for any eye shapes



Sexy

セクシー

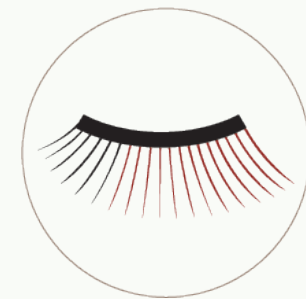
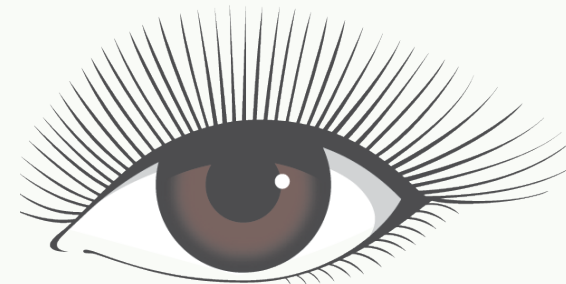
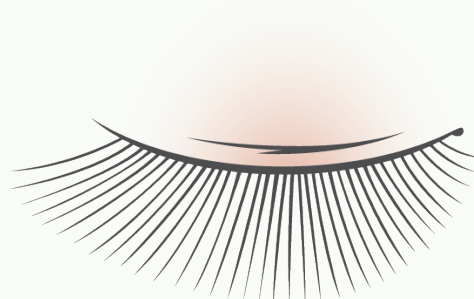
- Longest near the end of the eyes
- Creates a wing-effect - makes the eyes look longer
- Best for almond eye shapes



Gorgeous

ゴージャス

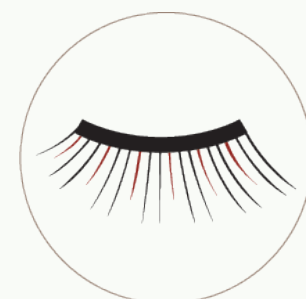
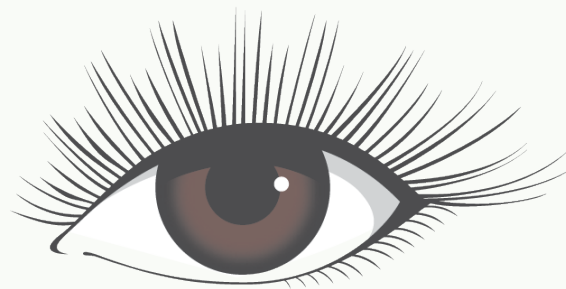
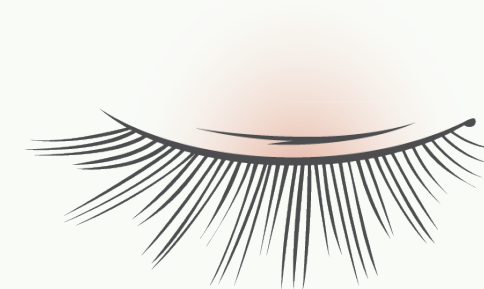
- Long & volume all around the center & the end of eyes
- Makes the eyes look full & enhanced
- Best for a more dramatic look



Natural Volume

ナチュラル ボリューム

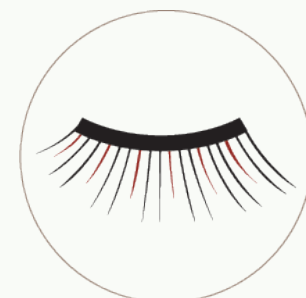
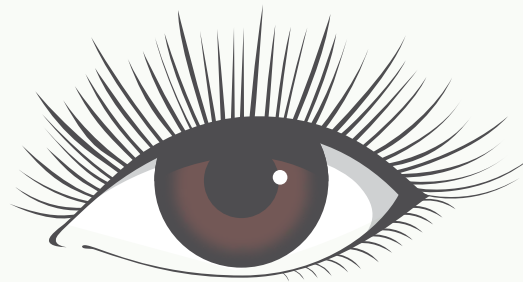
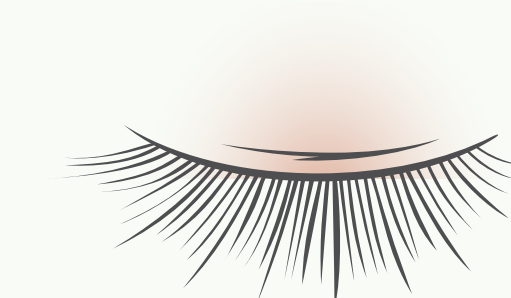
- The length will mimic the pattern of original lash
- Makes the eyes look natural yet volumized
- Best for any eye shapes



Radiant

レイディアント

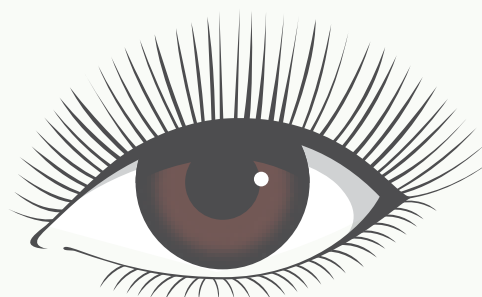
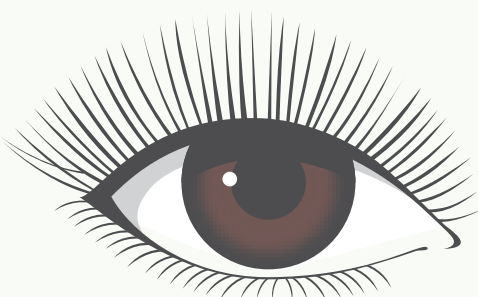
- A mix of long & short lash creating a natural statement look
- Makes the eyes look bigger & brighter
- Best for any eye shapes



+ Bottom Lash

下まつげ

- Making the whole eyes even brighter & more balanced
- A favorite in Japan!





#CleanLash
抗菌まつげ

All our lashes are #CleanLash —The **1st antibacterial eyelash** in the industry, manufactured by **Matsukaze Japan**.

Single Lash

Full Set	750
HyperRealistic Eyes	750
Refill*	500
Flat Lash #SuperSoft	800
Refill Flat Lash #SuperSoft*	550
Bottom Lash	250

Volume Lash

Soft Volume (Black Brown)	850 900
Rich Volume (Black Brown)	950 1.000
Refill Soft Volume* (Black Brown)	650 700
Refill Rich Volume* (Black Brown)	700 750

*Refill: within 1 month period, above 1 month will be charged **Full Set**

Gentle Lift

Gentle Lift Tint (GLT) 3.0	900
Gentle Lift Tint (GLT) 3.0 - 3x	2.550 (@ 850)
Gentle Lift Tint (GLT) 3.0 - 4x	3.200 (@ 800)

Gentle Lift Lash (GLL) 3.0

Gentle Lift Tint + Lash Extensions - Recommended for very droopy natural lashes

- Single 1.300
- Soft Volume 1.400
- Rich Volume 1.500

Please come back 2 days after your GLT 3.0 treatment to proceed with GLL 3.0



+200
per treatment

Lash Deep Cleansing	80
Removal from dandelion other salon	FREE 100

(All prices are in IDR .000)

FAQs

1. Is it painful / itchy? Does it sting?

Not at all, in fact you will not feel anything and will most likely fall asleep during process.

2. Process duration?

1.5 - 2 hours working time.

3. Will it make my original lash fall faster / damage my original lash?

No, lash extensions will fall down following your original lash growth cycle. Lash extensions will not reduce your lashes or make them go bald.

Correct lashing technique will only glue the extension(s) to ONE original lash (1^{mm} away from the root, never on the skin) therefore will not interrupt the growth and condition of the original lash.

**Note: Lash curler is proven to be more damaging, since it forcefully bends the original lash & often accidentally break or pluck some lash in the process.*

4. How long will it last?

4 to 5 weeks - depending on your maintenance, skin type, and weather. Recommended refill time: **3 weeks** (with max 2x refill, then please remove & restart the full set for maximum result).

Introducing **L COAT** (L COAT・Lコート) - is a coating layer applied on top of your lash extensions or lash lift, cured using safe LED light. Add lash durability & improve lash retention by **1-2 weeks**. Also, helps improve lash tidiness, maintain their form and shape for weeks.

L COAT is safe for your skin and health, causing no damage to natural lashes. **L COAT** for lash lift contains keratin to nourish the lash & it is waterproof.

5. Are our products safe?

We only use **medical-grade adhesives** that are **low fume, formaldehyde-free and long lasting** (Made in Japan).

All our glues are **MATSUREN-approved**. We also only use premium synthetic lash that are cruelty-free & more hygienic.

Why Dandelion?

- We only use Japan synthetic sable lashes which are **ultra-light weight & antibacterial**.
- Our extensions are so comfortable, you will feel literally nothing on your eyes after the extensions.
- Comprehensive selections of curls & thickness that you can customize according to your personal style.
- Our lash stylists are professionally trained following international standard.
- Certified internationally by **Japan Lash Association (JLA)** since 2016 & **Nippon Eyelash Extensions Association (NEEA)** since 2017.
- All lash products are imported from Tokyo & Osaka, Japan. Japan style lash has a thinner root which creates a **more natural and elegant look**.
- The first to bring **LCOAT** to Indonesia & only at **dandelion**.
LCOAT is a new patented technology from 株式会社ビュプロ (BeauPro) Japan.



All our Japan lash products have also obtained MATSUREN (Lash Safety Association of Japan) which ensures the safest material used, such as: **all glues are made in Japan, have low-fume & do not contain formaldehyde.**

Book Your Treatment Here 😊

JAKARTA

Jl. Metro Pondok Indah SG-21, Jakarta Selatan	_____	+62 8121 622 622
Jl. Senopati No. 66, Jakarta Selatan	_____	+62 811 900 9919
Jl. Bumi No. 24, Kby. Baru, Jakarta Selatan	_____	+62 811 900 1131
Jl. Wahid Hasyim No. 47, Menteng, Jakarta Pusat	_____	+62 811 900 9210

SURABAYA

Taman Gapura E2 No. 7, Citraland, Surabaya Barat	_____	+62 811 3909 23
Jl. Dharmahusada Indah Timur RR-19, Surabaya Timur	_____	+62 811 3199 009